

Planning Committee Meeting

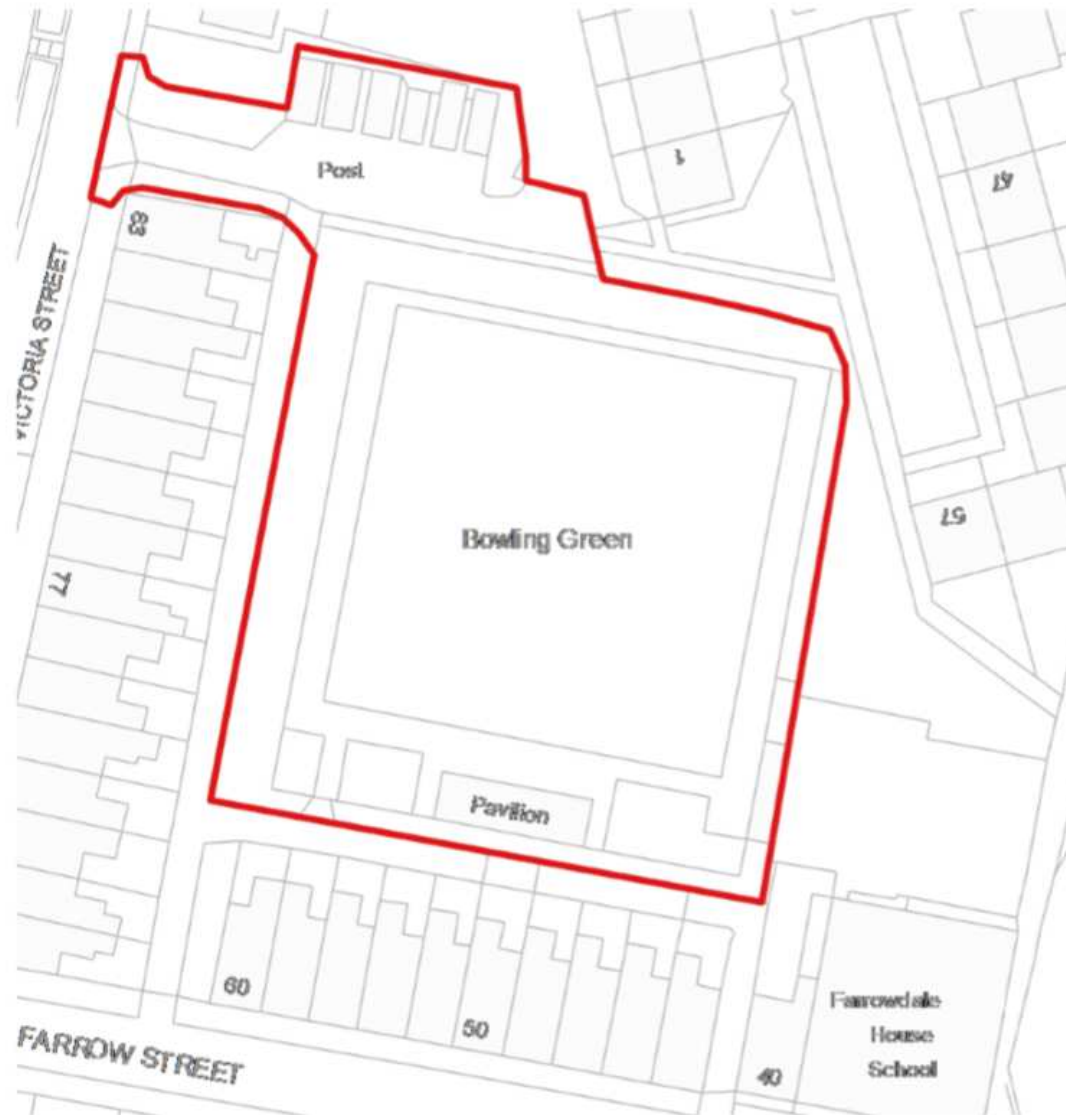
3 June 2020

PA/342896/19: Construction of 10no. three-bedroom houses with associated works and additional residents' parking and construction of 5 no. garages, following demolition of 6 no. existing garages.

Former Bowling Green, Victoria Street, Shaw, Oldham,
OL2 7AD



Site Location Plan



Proposed layout



Proposed principal elevations



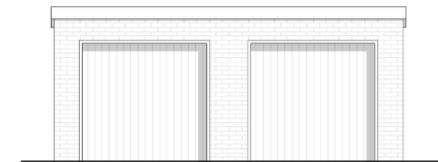
Front Elevation



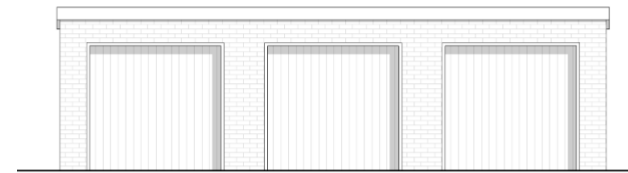
Front Elevation
1 : 100



Front Elevation

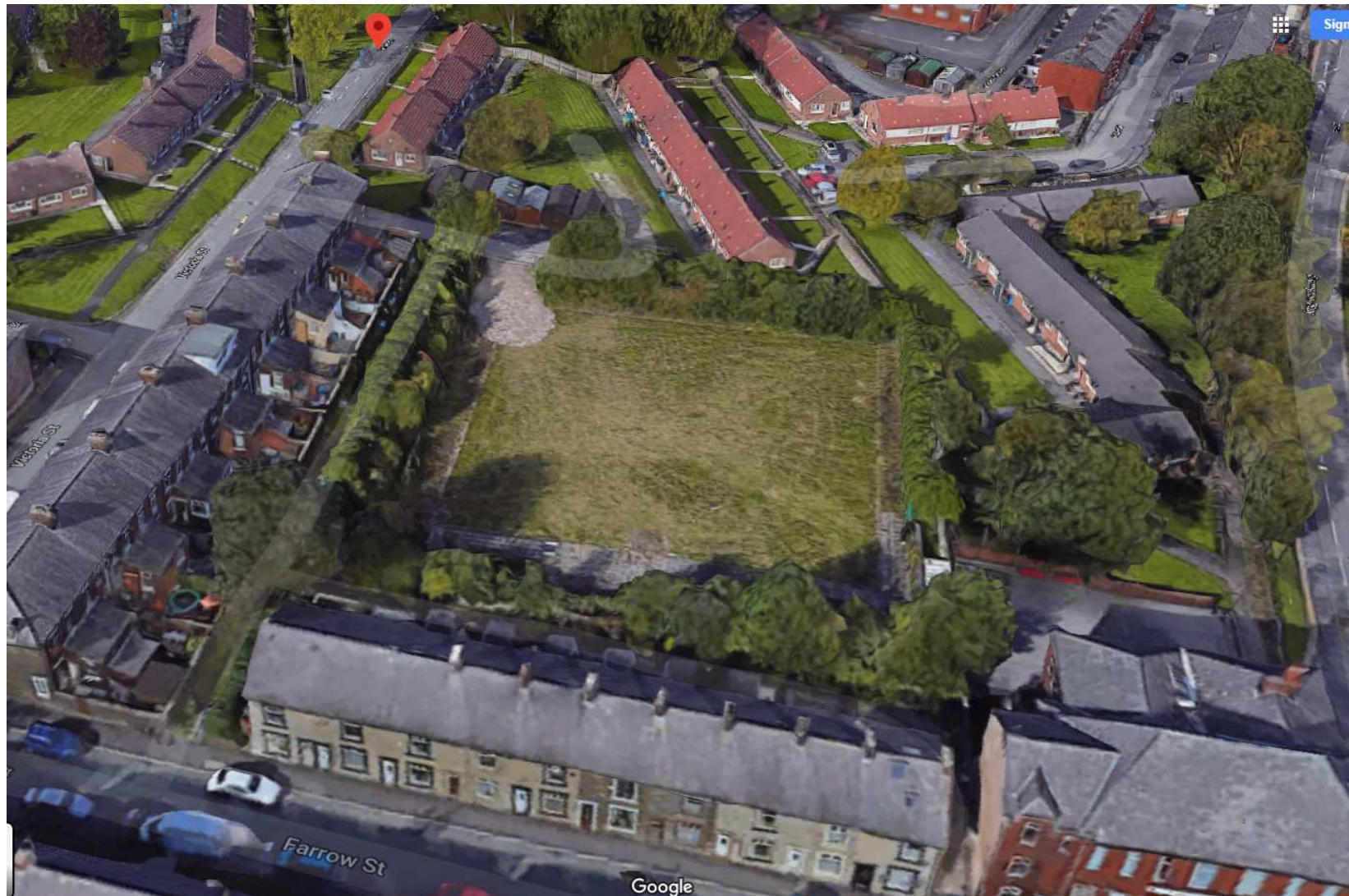


BLOCK 1



BLOCK 2

Aerial view from the south



Access from Victoria Street and continuing footpath



View to all boundaries of the site



View either side of access



Site Location Plan

